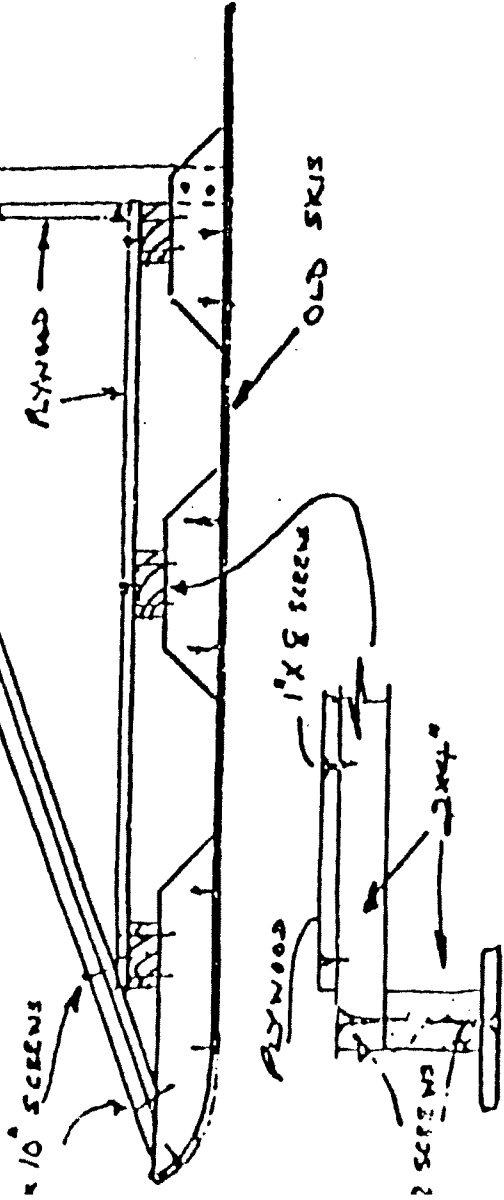


AGENCY RESCUE MISSION SLED

2 PLYWOOD 18" x 48" STRAPPING



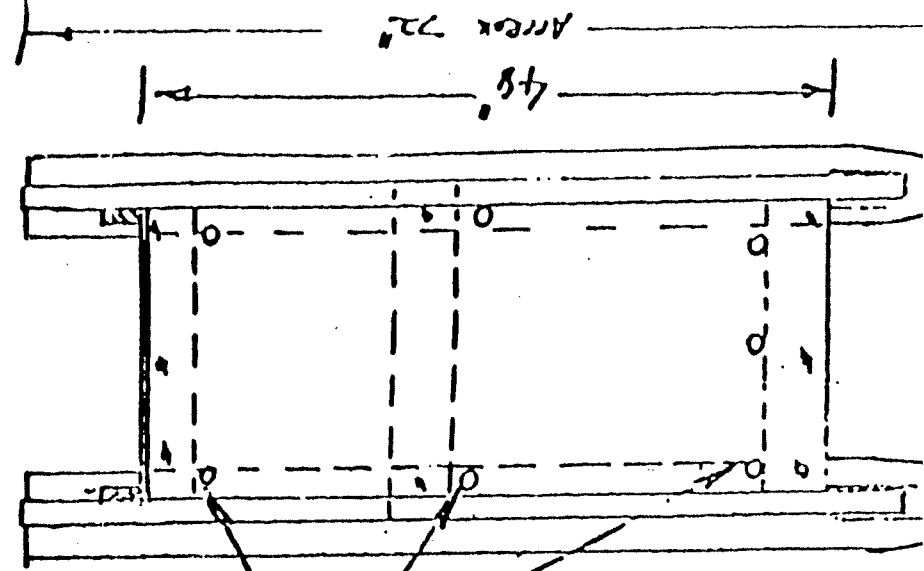
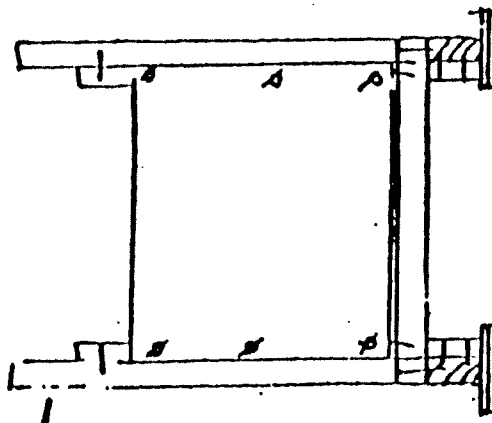
LIST OF MATERIALS (APPROX)

- 2 OLD SKIS
- 6 PIECES 2 x 4 APPROX 12' LONG
- 3 PIECES 2 x 4 APPROX 24' LONG
- 2 PIECES 1 1/2 x 1 1/2 OR (2 PIECES 1 1/2 x 2 1/4) STRAPPING
- 1 PIECE PLYWOOD 18" x 48"
- 1 PIECE PLYWOOD 18" x 18"

SUGGEST SCREWS BE USED INSTEAD OF NAILS
 APPROX TIME REQUIRED TO BUILD 8-10 HOURS
 APPROX WEIGHT 40 LBS

HANDLES ADDED

18"



TIE DOWN HOLES
 3/4" DIAM.